

ORDINANCE NO. 01-5158

AN ORDINANCE OF THE CITY OF BILLINGS, AMENDING BILLINGS MUNICIPAL CODE, CHAPTER 11, ELECTIONS, IN PARTICULAR, SECTION 11-102(c), WARD BOUNDARIES; AND CHANGING THE WARD BOUNDARIES ESTABLISHED THEREIN BY ADDING CERTAIN NEWLY ANNEXED REAL PROPERTY TO WARD III, PROVIDING FOR CERTIFICATION AND REPEALING OF ALL ORDINANCES AND RESOLUTIONS INCONSISTENT THEREWITH.

BE IT RESOLVED BY THE CITY COUNCIL OF THE CITY OF BILLINGS, MONTANA:

1. AMENDMENT. Pursuant to Billings Municipal Code, Section 1.16.030, and the State Law, Billings Municipal Code, Section 1.16.030 Ward Boundaries, is hereby amended by adding to the following designated Ward the following described real property:

WARD III:

Lot 1A & 2, Block 1, Sharptail Subdivision

(#01-02)

2. CERTIFICATION. Pursuant to M.C.A. Section 13-3-103, the above change and alteration is hereby certified to the election administrator by the City Council, and the City Administrator or his designee is hereby directed to certify the changes and alterations and to deliver a map showing the boundaries of the ward, the streets, avenues and alleys by name, and the ward by number, to the election administrator not more than ten (10) days after the effective date of this ordinance.

3. REPEALER. All other ordinances, sections of the Billings Municipal Code and ordinances inconsistent herewith are hereby repealed.

PASSED by the City Council on the first reading this 14th day of June, 2001.

PASSED, ADOPTED AND APPROVED on second reading this 25th day of June, 2001.

ORD. NO. 01-5158



THE CITY OF BILLINGS:

BY: Michael A. Jensen
Charles F. Tooley, MAYOR

Deputy Mayor in the absence of the Mayor

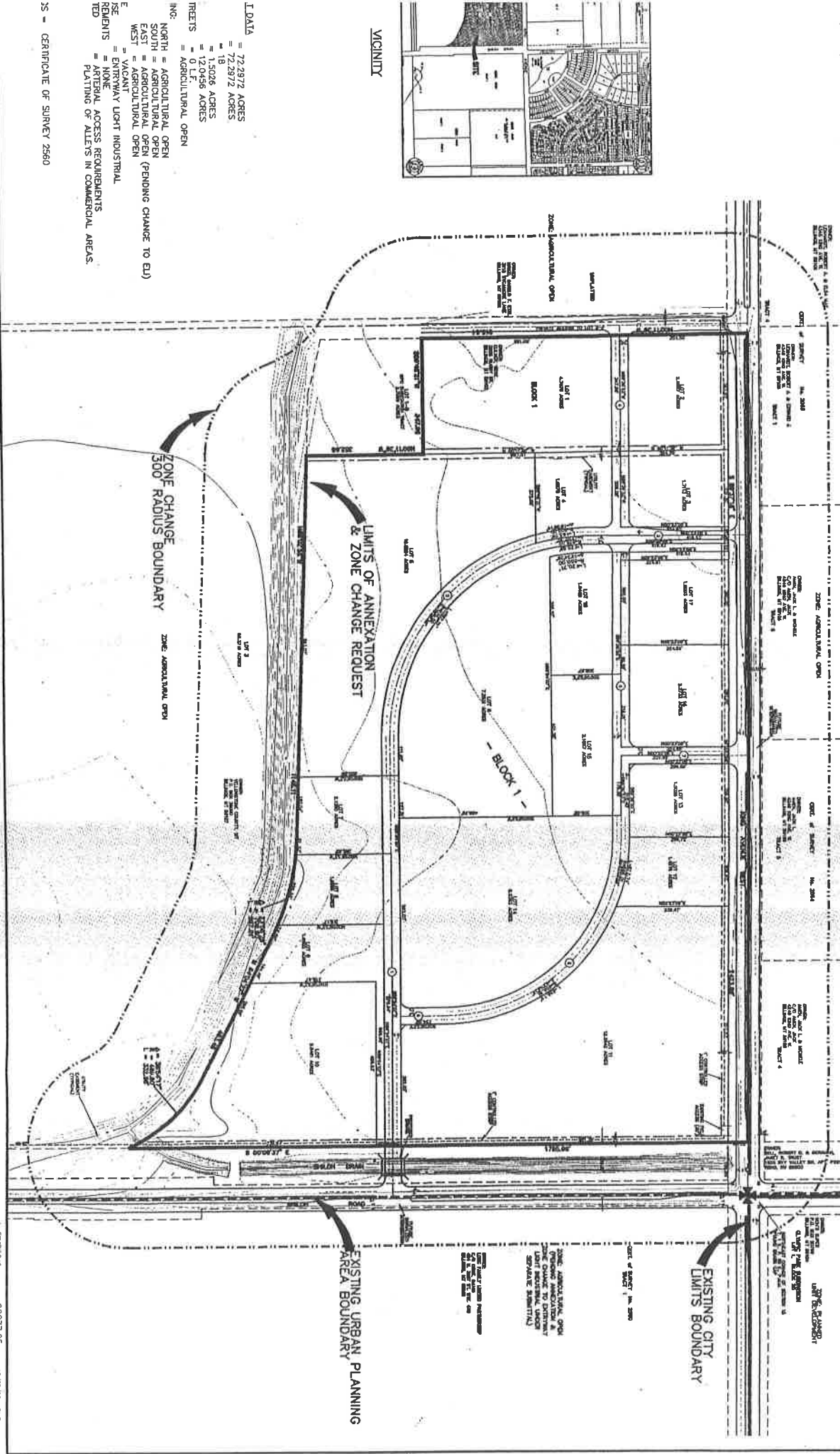
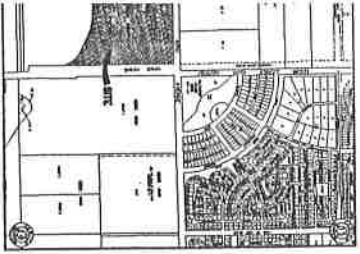
ATTEST:

BY: Susan Shubler
Marita Herold, CMC CITY CLERK
Deputy City Clerk

ED FOR : KING RESOURCES INC. & KINCAID LAND LLC
 ED BY : ENGINEERING, INC.
 : 1" = 300'

CITY ZONE CHANGE AND ANNEXATION EXHIBIT T - T
MONTANA SAPPHIRE SUBDIVISION
 SITUATED IN THE NE 1/4 OF SECTION 15, T. 15S., R. 25E., P.M.M.
 BILLINGS, MONTANA

JANUARY, 2001
 BILLINGS, MONTANA



VICINITY

LDATA
 = 72,297.2 ACRES
 = 72,297.2 ACRES
 = 18
 = 1,500.8 ACRES
 = 12,095.8 ACRES

TREES
 = Agricultural, Open

ING:
 NORTH = AGRICULTURAL, OPEN
 SOUTH = AGRICULTURAL, OPEN (PENDING CHANGE TO EU)
 EAST = AGRICULTURAL, OPEN
 WEST = AGRICULTURAL, OPEN
 = VACANT

E
 = ENTRYWAY LIGHT INDUSTRIAL

REMENTS
 = NONE

TD
 = ARTERIAL ACCESS REQUIREMENTS
 = PLATING OF ALLEYS IN COMMERCIAL AREAS

35 - CERTIFICATE OF SURVEY 2560

ENGINEERS 92077.05 1/27/01 248