

I certify that this is a true and correct copy of the original _____
of _____ in my office.

RESOLUTION NO. 07-18596

A RESOLUTION OF THE CITY OF BILLINGS, MONTANA, DISCONTINUING AND VACATING a portion of Moose Hollow Lane.

City Clerk
to Co R 9/18/07

WHEREAS, a proper petition was filed with the City Council of the City of Billings, Montana, as per Section 22-601 BMCC, requesting discontinuance and vacation of a portion of Moose Hollow Lane as described hereinafter; and

WHEREAS, a public hearing was properly noticed and held as required by law.

NOW, THEREFORE, BE IT RESOLVED BY THE CITY COUNCIL OF THE CITY OF BILLINGS, MONTANA, AS FOLLOWS:

- 1. DISCONTINUANCE AND VACATION. Pursuant to Sections 7-14-4114 and 7-14-4115, M.C.A., a portion of Moose Hollow Lane more particularly described as follows:

Beginning at a point which is the southwest corner of Lot 2, Block 1 of Aspen Gateway Subdivision; thence, from said Point of Beginning, N 89°28'34" E a distance of 76.17 feet; thence along a non-tangential curve to the right having a Radius of 55.00 feet; a Delta of 212°16'20" and a length of 203.77 feet (said curve subtended by a Chord bearing S 78°40'26" E a distance of 105.67 feet); thence along a curve to the left having a Radius of 10.00 feet, a Delta of 61°34'02" and a Length of 10.75 (said curve subtended by a Chord bearing S 3°19'17" E a distance of 10.24 feet); thence along a curve to the left having a Radius of 155.00 feet, a Delta of 71°04'23" and a Length of 192.27 feet (said curve subtended by a chord bearing S 69°38'29" E a distance of 180.18 feet); thence N 74°49'19 E a distance of 139.00 feet; thence along a curve to the left having a Radius of 157.50 feet, a Delta of 75°20'45" and a Length of 207.12 feet (said curve subtended by a Chord bearing N 37°08'56" E a distance of 192.51 feet); thence N 89°28'34" E a distance of 50.00 feet; thence S 0°31'26" E a distance of 6.48 feet; thence along a curve to the right having a Radius of 212.50 feet, a Delta of 75°20'45" and a Length of 279.44 feet (said curve subtended by an Chord bearing S 37°08'56" W a distance of 259.74 feet); thence S 74°49'19" W a distance of 199.88 feet; thence NORTH a distance of 10.31 feet; thence along a curve to the right having a Radius of 215.00 feet, A Delta of 57°08'40" and a Length of 214.43 feet (said curve subtended by a Chord bearing N 59°06'23" a distance of 205.65 feet); thence along a curve to the left having a Radius of 10.00 feet, a Delta of 45°09'36", and a Length of 7.88 feet (said curve subtended by a Chord bearing N 53°06'51" W a distance of 7.68 feet); thence along a curve to the right having a Radius of 55.00 feet, a Delta of 21°50'53" and a length of 20.97 feet (said curve subtended by a Chord bearing N 64°46'13" W a distance of 20.85 feet); thence S 89°28'34" W a distance of 98.53 feet; thence NORTH a distance of 40.00 feet to the Point of Beginning; said described tract having an area of 48,888 feet and also as described in attached "EXHIBIT A".

Is hereby discontinued, abandoned and vacated.

- 2. PUBLIC INTEREST. The discontinuance, vacation and abandonment of the above described a portion of Moose Hollow Lane is in the best interest of the public and can be done without any public detriment.

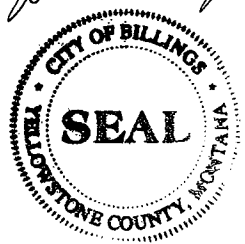
PASSED by the City Council and APPROVED this 10th day of September 2007.

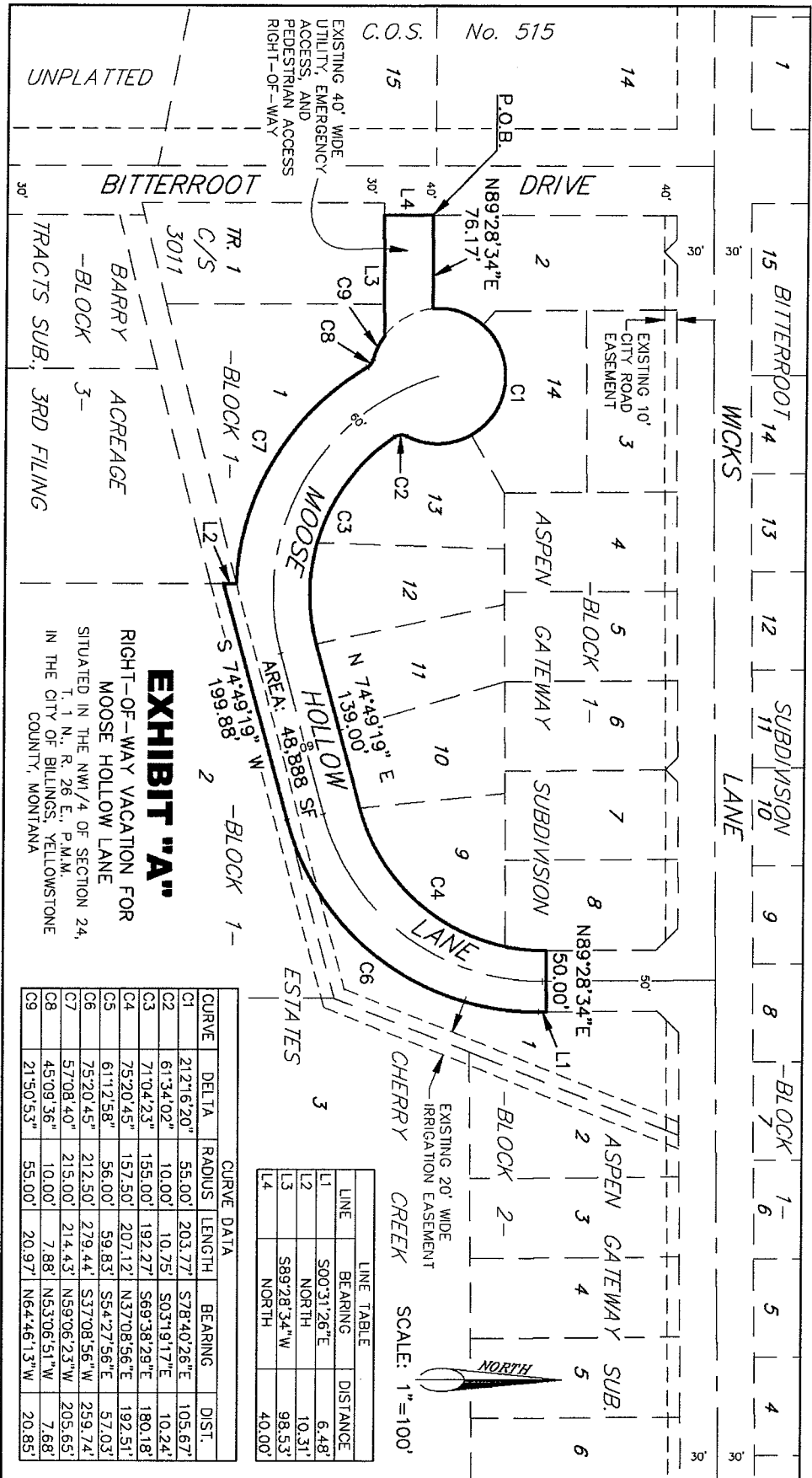
THE CITY OF BILLINGS:

BY: [Signature]
Ron Tussing MAYOR

ATTEST:

BY: [Signature]
Cari Martin CITY CLERK





CURVE	DELTA	RADIUS	LENGTH	BEARING	DIST.
C1	212°16'20"	55.00'	203.77'	S78°40'26"E	105.67'
C2	61°34'02"	10.00'	10.75'	S03°19'17"E	10.24'
C3	71°04'23"	155.00'	192.27'	S69°38'29"E	180.18'
C4	75°20'45"	157.50'	207.12'	N37°08'56"E	192.51'
C5	61°12'58"	56.00'	59.83'	S54°27'56"E	57.03'
C6	75°20'45"	212.50'	279.44'	S37°08'56"W	259.74'
C7	57°08'40"	215.00'	214.43'	N59°06'23"W	205.65'
C8	45°09'36"	10.00'	7.88'	N53°06'51"W	7.68'
C9	21°50'53"	55.00'	20.97'	N64°46'13"W	20.85'

LINE	BEARING	DISTANCE
L1	S00°31'26"E	6.48'
L2	NORTH	10.31'
L3	S89°28'34"W	98.53'
L4	NORTH	40.00'