

TRAFFIC CONTROL BOARD MINUTES

July 26, 2017

APPROVED AS AMENDED

MEMBERS PRESENT: Jerry Dunning, Pierre Jomini, Ron Alles, Sondra Baker, Sgt. Gartner (Substitute for Capt. Harper)

MEMBERS ABSENT: Gene Wade, Todd Cormier, Capt. Harper

STAFF SUPPORT: Erin Claunch, Aaron Lebsack, Dakota Martonen, Lora Mattox

GUESTS: None

BUSINESS MEETING:

Call to order: Erin Claunch called the meeting to order at 12:08 pm in the conference room of the Public Works Building, 2224 Montana Avenue.

Minutes: Motion by Jerry Dunning for approval of the June 2017 minutes. Seconded by Pierre Jomini. Motion carried on a voice vote.

OPEN PUBLIC COMMENT: None

STAFF REPORTS:

- **School District 2 Boundary Changes:** Erin gave a PowerPoint presentation explaining the new School District 2 boundary changes – a copy of the presentation is attached to these minutes. The following are questions from the Board throughout the duration of the presentation.
 - a. **Q. (Pierre) Was anyone from the City Engineering staff on the committee reviewing the boundaries? A.** Erin stated that there was a staff engineer present. Lora added that there was a member from the Planning Department present as well.
 - b. **Q. (Pierre) Is there coordination between public and private schools, for example in regards to Wednesday early out? A.** Sondra said that Private schools are their own individual entity. Erin added that the static school zone signing is 7 am-4 pm, regardless of if it's early out or not.
 - c. **Q. (Ron) Do the children who live north of Highway 87 and east of Roundup Road get bused to Medicine Crow? A.** Sondra explained that if warranted, children living within three miles of the school are offered safety busing with a transportation fee applied. Anything over three miles is free.
 - d. **Q. (Pierre) On which side is the walkway on 54th Street West between Rimrock Road and Grand Avenue? A.** Erin stated the new trail is being built on the west side of the road.

BOARD REPORTS: Lora informed the Board that the Unified Planning Work Program is in the process of being completed and updated. This plan will correspond to the federal fiscal year beginning October 1st and will help determine where federal funds will be spent in the next year. Federal funds are approximately 55% of the annual budget. The 2018 update of the Long Range Transportation Plan is nearing and will hopefully be

using the travel demand model. Lora reported that a co-worker had safety concerns about pedestrian crossings at N 30th Street and 11th Avenue North.

Responses to Board Inquiries: Jerry expressed concern about the traffic control along Central Avenue in regards to the mill and overlay project. Erin stated that the project has focused on moving traffic control along with the project due to heavy traffic volumes and limited right-of-way. There were suggestions of “NO LEFT TURN” signs at intersections, flaggers at main intersections during peak hours or split phasing at signalized intersections. These options should be considered for future projects.

OLD BUSINESS:

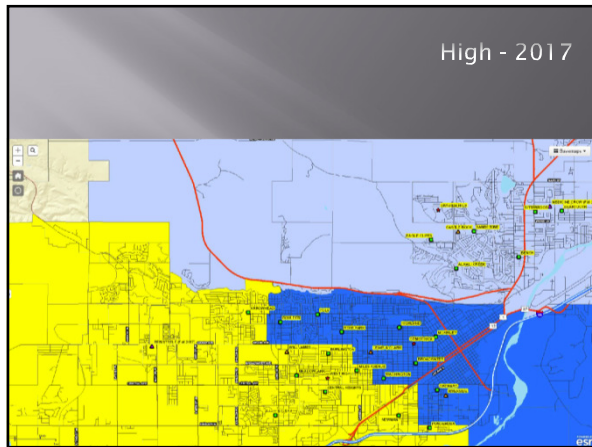
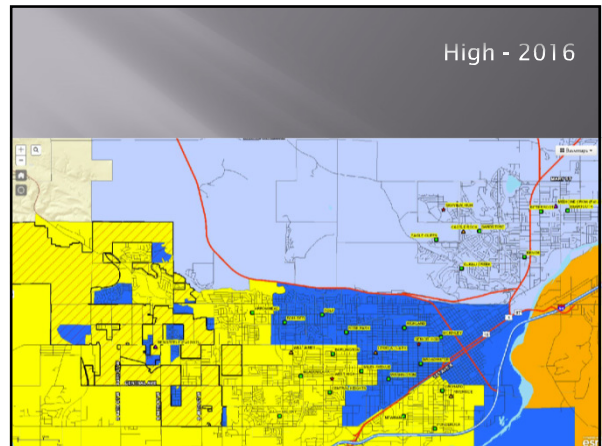
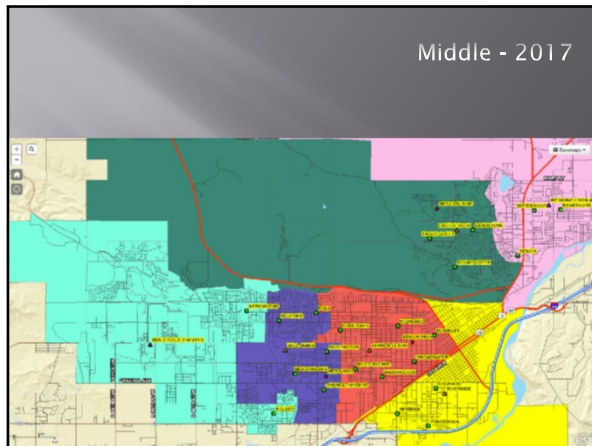
- **Local Option Gas Tax:** Erin passed around handouts of the projected gas tax allocations for every City and Town throughout Montana for the partial 2018 increase, 2019 increase, and 2023 increase.

NEW BUSINESS:

- **Traffic Control Board roles/responsibilities:** This item was delayed until a later meeting when more Board members are present. Erin offered to discuss with the TCB members the possibility of reducing the frequency of the Board meetings. The suggestion would be to hold meetings every other month, or quarterly. This would allow the Board to focus on pertinent traffic issues.

ADJOURNMENT:

The meeting was adjourned at 1:20 pm.



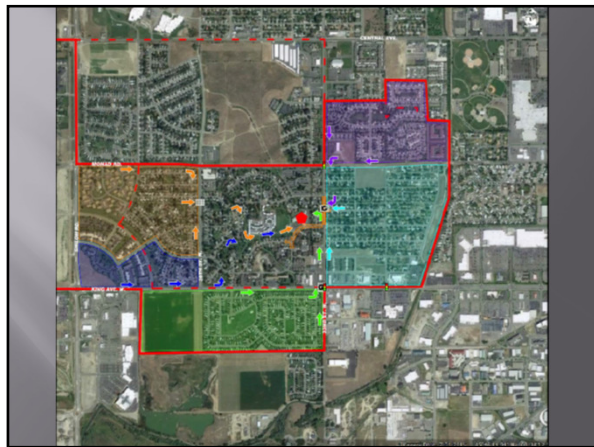
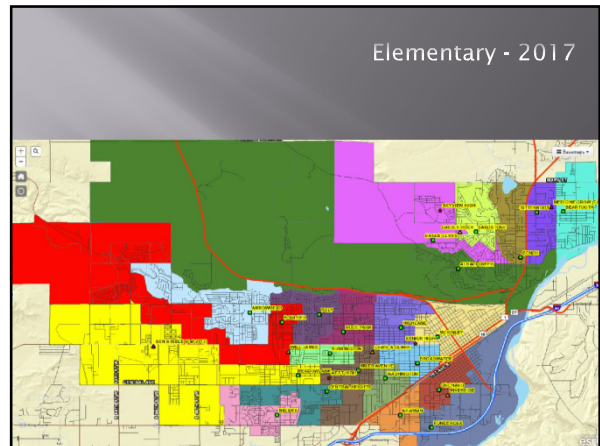
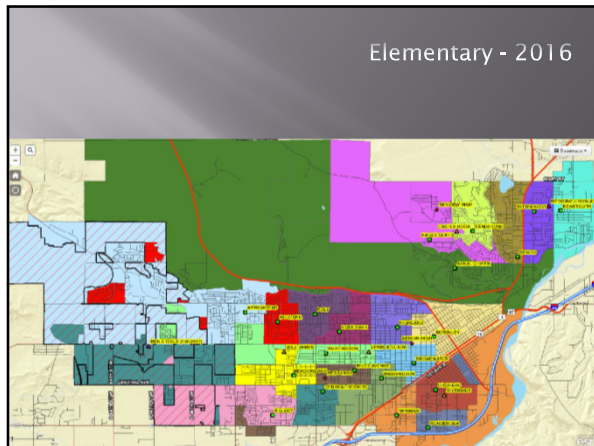
How do New Boundaries impact Streets??

- ❑ Satellite Neighborhoods
- ❑ Bussing Operations
- ❑ Safe Routes to School
- ❑ School crossings
 - Existing school crossings may not be needed
 - New crossings may be needed

What is PWE doing to address?

- ❑ Meeting with Principals/SD2
- ❑ Updating school zone policies
 - Crossing guidelines (Type and locations)
 - School speed zones (Elem vs. Middle vs. High?)
 - Flashers (Dependent on what?)
- ❑ SRTS Maps

Big Sky Elementary School SRTS



- ### Next Steps
- Implement school crossing changes
 - Eliminate crossings
 - Add new crossings
 - Disseminate maps to School District
 - Identify projects to improve SRTS
 - New sidewalk projects
 - Enhanced crossings
 - School Speed Zones
 - Identify funding sources

Questions???